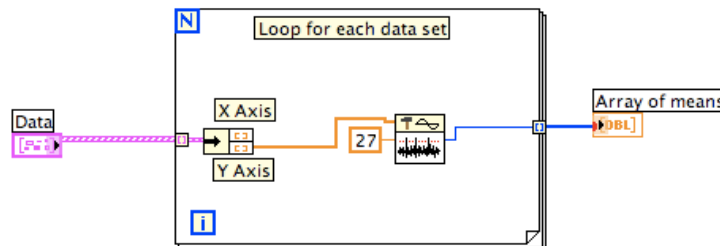
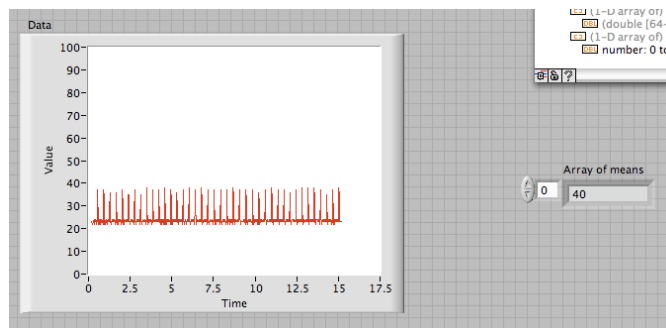
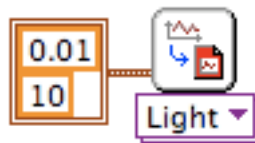
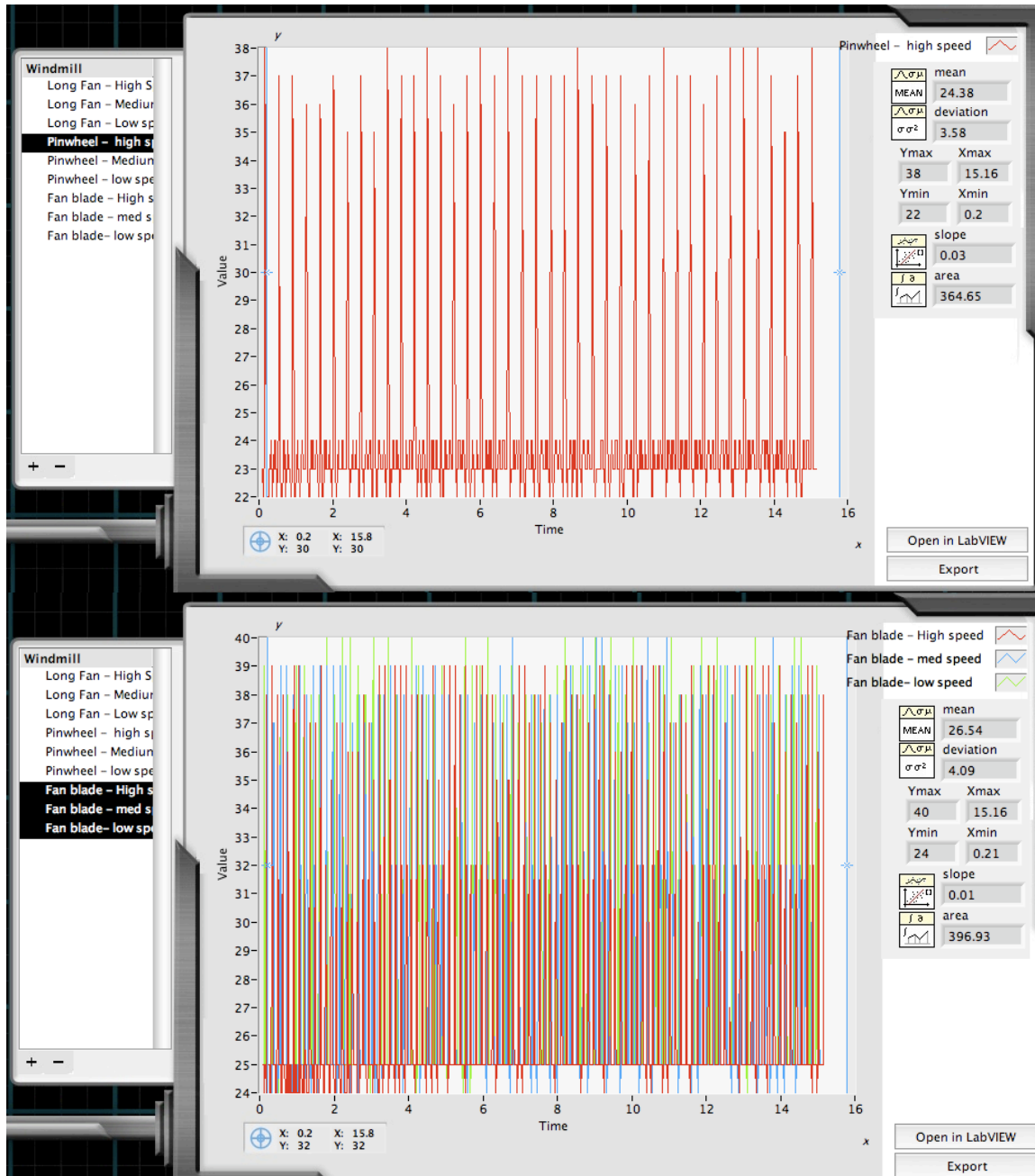


Follow these instructions to datalog properly for this experiment:

- 1: In LabView go to Tools→Applications→DataViewer
- 2: Click on the data set to import, and compare the graph to previous or future imported data
- 3: Go to the bottom left and click on the Open in Labview button
- 4: Replace the MEAN block in the for loop with the Detect Peak Threshold block in Signal Processing→Signal Operation
- 5: Go the front panel, run the program, and you will have your results. Remember to set the proper threshold based on the graph in data viewer!

Here is an example program with graphs and results:





Windmill results:

Blade Type	Fan Speed	Total Rotations	Rotations/Second
Fan	Low	72	4.8

Fan	Medium	86	5.73
Fan	High	102	6.8
Long	Low	100	6.67
Long	Medium	156	10.4
Long	High	192	12.8
Pinwheel	Low	22	1.47
Pinwheel	Medium	28	1.87
Pinwheel	High	40	2.67