

## Bluetooth Connection Tips

### Turn on Bluetooth

1. Take 2 NXTs and turn on Bluetooth for each.
  - a. On your NXT, scroll over to BLUETOOTH using the light grey arrows. Select BLUETOOTH by pushing the orange button.



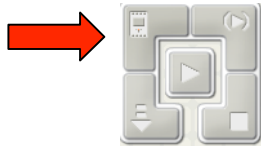
- b. Then, scroll over to ON/OFF using the light grey arrows. To turn on Bluetooth, select ON/OFF by pushing the orange button. When you select ON, a little Bluetooth symbol will appear in the upper left hand corner of the screen (see above picture).



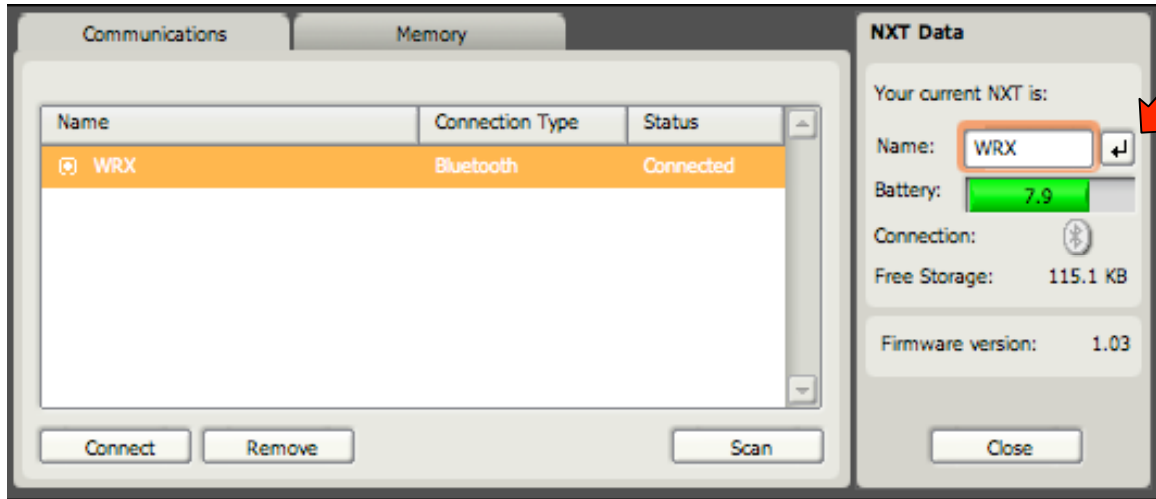
### Rename Your NXT

*It's easiest to identify each NXT in the Bluetooth setup if each one has a different name*

1. In NXT-G, select your NXT WINDOW icon in your bottom right corner control panel.



2. Select your NXT under your COMMUNICATION tab by clicking and highlighting it in orange. In the right panel there is a box to rename your NXT. Click the button to the right (see arrow) when done.



### Setup Bluetooth NXT-to-NXT Connection

1. Make sure that Bluetooth is turned on for both NXTs (see directions above).
2. On one NXT, scroll over and select the BLUETOOTH menu using the light grey arrow buttons.
3. Then, scroll over to SEARCH.



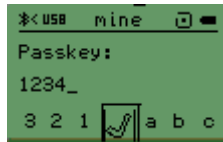
4. Select SEARCH and choose your other NXT (look for the name). This need be done with only one of the NXTs. In the example, the second NXT is named "WRX".



5. You will then be prompted if you want to connect (choose yes) and then to choose a slot (the NXT can be connected to 3 devices at a time). Choose any slot.



6. If done correctly, each NXT will beep and be prompted to enter a passkey. The passkey is 1234 and should be automatically entered on the screen.



7. Select the checkmark on both NXTs by clicking the orange button to establish a connection. Connection can be verified by looking up in the top left corner. If the Bluetooth symbol only has a < sign next to it, no connection is made. If it has <math>\diamond</math> then a connection is made (see below circle).
8. After you have established a connection you will be able to see the connection under BLUETOOTH:CONNECTIONS. Both NXTs will show the other.

